

QSC™

TouchMix™ 16

Self-Guided Tour



WELCOME TO TOUCHMIX!

This guide will introduce you to many commonly used features in the TouchMix. Click on a chapter title below, or follow the guide from start to finish for the complete TouchMix Tour. The “home” icon on the bottom of each page will bring you back to select another chapter. Happy mixing!

CHAPTER	PG
1. Navigation	02
2. Simple & Advanced Mode	07
3. Presets	09
4. Scenes	12
5. FX	13
6. Wizards	15
7. Auxes	18
8. Recording	20
9. Video Training	24

1. NAVIGATION

Let's go through some basic controls and navigation.

First you'll need to know how to **power Up/Down the mixer**:

- Press the **Power/Standby** button on the right-hand side of the mixer to power on the mixer (**Image 1.1**).
- When the **Power/Standby** button is pressed to power down, a dialogue box will appear on the screen asking if you'd like to power down the mixer.

ALWAYS power the mixer down before unplugging the power.



Image 1.1

Now let's start our tour by resetting the mixer.

To **Recall the Default Scene**:

- Press the **"Menu"** (**Image 1.2**) button.



Image 1.2

- Select **"Scenes"** from the main **Menu** Screen (**Image 1.3**).



Image 1.3

1. NAVIGATION (Cont'd)

- Select “**Default**” under the **Factory** bank. Press “**Recall**” in the lower left-hand corner (**Image 1.4**). Now press “**Home**” button to get back to your main **faders** and begin mixing.

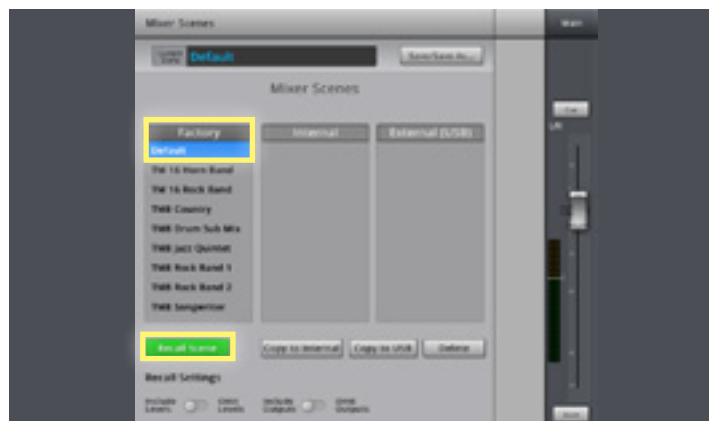


Image 1.4

- Select a **Channel Fader** (**Image 1.5**) by touching it. Turn the **Master Encoder** (**Image 1.6**) to adjust the channel volume level.



Image 1.5

This “touch-and-turn” technique allows you navigate quickly and make precise adjustments at the same time. The tactile control of the **Master-Encoder** is one of the many features that sets Touchmix apart from other digital mixers. For finer adjustments (like precise EQ frequency control) press the knob while turning.



Image 1.6

1. NAVIGATION (Cont'd)

Now that you've got the basic control of the mixer down, let's dive a little deeper and explore the **Channel Strip** of a channel.

- Open a channel's **Channel Strip** by touching the channel name above the fader (**Image 1.7**).

Here you will find the **EQ**, **Compressor** and **Gate** for the Input you have selected. You'll also find the **FX** and **Aux Routing**, but we'll get to that later.



Image 1.7

- Select any of the parameters on the **EQ** simply by touching the knob you want to adjust (**Image 1.8**).



Image 1.8

- Use the **Master Encoder** to adjust its value. (**Image 1.9**)

Once again, the “touch-and-turn” technique allows for quick and accurate control of the mixer at all times.



Master Encoder Image 1.9

1. NAVIGATION (Cont'd)

- You can select the **Channel Compressor (Comp)** and **Gate** by touching their respective tabs at the top of the screen (**Image 1.10**).



Image 1.10

- Once at **Comp (Image 1.11)** or **GATE** you can touch and adjust parameters with the **Master-Encoder** just like the **Channel Faders** and **EQ**.



Image 1.11

TouchMix also gives you assignable **Phantom Power** on all your inputs.

- To assign **Phantom Power** to an input—Press the **Phantom “+48V”** button (**Image 1.12**).
- From this screen you can employ **Phantom Power** to any and all of your **XLR Input Channels** simply by touching the channels on the screen.



Image 1.12

1. NAVIGATION (Cont'd)

When *Phantom Power* is assigned to a channel, that channel will appear **RED**, with a “+48V” indication on the input icon (**Image 1.13**).



Image 1.13

- To **remove Phantom Power** on a channel just touch it again and the *Phantom Power* designation will be removed (**Image 1.14**).



Image 1.14

By now you have a good understanding of how to effectively navigate the TouchMix and setup a basic mix. Continue on to learn more about TouchMix in the next section.

A video overview of Mixer Navigation is also available for you to enjoy online at:

qsctraining.com/touchmix

2. ADVANCED & SIMPLE MODE

TouchMix caters to all different levels of users. With Simple and Advanced Modes, it is easy for any user to quickly create a mix and sound great. Advanced and Simple Modes are available on a variety of different functions on the mixer including Gates, Compressors, EQ and FX. Advanced Mode allows control over a given function while Simple Mode hides and condenses controls to make it easier and faster to edit and mix.

To change between the two modes:

- Open the **Channel Strip** by touching its name above the **fader** of a channel from the **HOME** screen (**Image 2.1**).



Image 2.1

- Select the tab at the top of the screen for the function you wish to use: **EQ, COMP, GATE** (**Image 2.2**).
- Touch the “**Simple**” (**Image 2.2-2.3**) button on the screen of the function you are using.



Image 2.2

- To get back to **Advanced Mode** just touch the button again and the controls will revert back to **Advanced Mode** (**Image 2.2-2.3**).



Image 2.3

2. ADVANCED & SIMPLE MODE (Cont'd)

You can also set the mixer to **Simple** or **Advanced Mode** globally.

- Press “**Menu**” button (**Image 2.4**).



Image 2.4

- “**Simple**” or “**Advanced**” (**Image 2.5**) in the lower right-hand portion of the screen, next to the **Master Encoder** (**Image 1.9**).
- Next, you will be asked: “*Are you sure that you want to set all screens to ‘Simple’ or ‘Advanced’ edit mode?*”
- Select “**Yes**” on this screen.



Image 2.5

A video overview of Simple and Advanced Modes is also available for you to enjoy online at:

qsctraining.com/touchmix

3. PRESETS

TouchMix comes equipped with a multitude of factory-programmed channel presets. These tools are designed to help you get a great live sound mix as quickly and as easily as possible. These high quality presets are good for a variety instruments, microphones and musical styles. All of TouchMix's factory presets were created by a team of highly skilled mix engineers throughout many live sessions, utilizing a variety of instruments being played through a variety of different live sound reinforcement equipment and gear.

To setup a channel with a **Preset**:

- From the “**HOME**” screen open the **Channel Strip** by tapping on its name above the **Channel Fader** (**Image 3.1**).
- Select “**Presets**” from the top of the **Channel Strip** (**Image 3.2**).



Image 3.1



Image 3.2

Under the instrument column you'll find all of the available preset categories (**Image 3.3**).

- Select a category from the “**Instrument**” window.



Image 3.3

3. PRESETS (Cont'd)

The middle window will display a list of options for that category.

- Select one of these options—the right window will display a list of options for that instrument (**Image 3.4**).
- Select the option that seems best for your application.



Image 3.4

- Press “**Recall Preset**” (**Image 3.5**) in the bottom left-hand corner of the screen.



Image 3.5

To learn more about a Preset, tap the “**Preset Info**” button on the Presets screen and a window will appear with a brief description of the mixer (**Image 3.6**).

Once a Preset is recalled the channel is configured with the settings of that Preset. You can tap on the EQ, Comp, or Gate tabs to see the Preset settings.



Image 3.6

3. PRESETS (Cont'd)

Now let's say you've recalled a **Preset** and you've made some adjustments on your own. Maybe you fine-tuned the **EQ**, or adjusted the **Compressor** to better match your application. You can save those settings as your own **Custom Preset** and have the ability to recall it again at any time.

To save a **Custom Preset**:

- Navigate back to the “**Presets**” (**Image 3.7**) tab within the Input channel
- Switch to “**User**” (**Image 3.8**) mode by toggling the switch above the “**Instrument**” bank.
- Press “**Save/Save As**” (**Image 3.9**).
- You can give your **Preset** a name and save it either internally to the mixer or to a connected **USB** storage device.

A video overview of Presets is also available for you to enjoy online at:

qsctraining.com/touchmix



Image 3.7

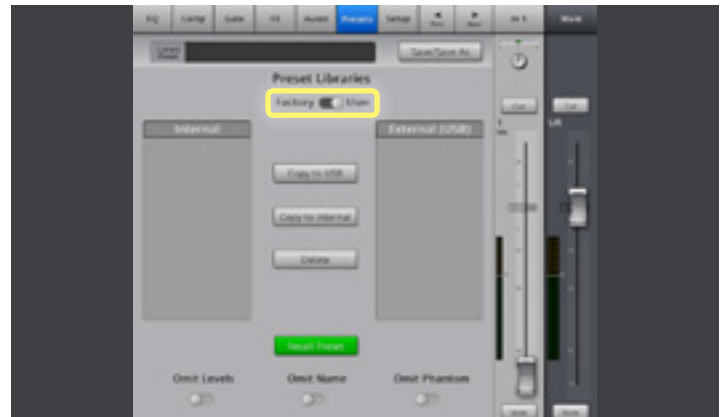


Image 3.8

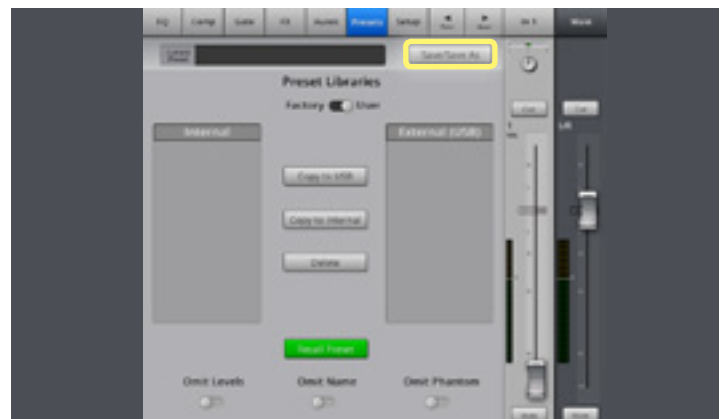


Image 3.9

4. SCENES

This is the section of the mixer in which you can create and store up to 130 Custom User Scenes. A Scene is a snapshot of the entire mixer and all of its settings. If you get the mixer dialed in for a particular venue you play often or maybe a particular band or even a song, you can save those settings as a scene and recall them at any time. TouchMix also features a number of factory programmed scenes already built in to the mixer. You can use these to get the mixer setup for different applications very quickly.

To Save a Custom Scene:

- Press “Menu” (Image 4.1).



Image 4.1

- Select “Scenes” (Image 4.2).
- A pop-up window will appear on the screen where you touch “Save/Save As.”

To name your Scene and designate the Save location to either Internal or External USB, touch “Save.” Now you have a custom Scene that can be recalled at any time.

To Recall a Scene:

- Press “Menu” (Image 4.1) and Select “Scenes” (Image 4.1).
- Select the Scene you’d like to Recall.
- Touch “Recall” (Image 4.3) in the lower left-hand corner of the screen.

Once the Scene is Recalled press the “Home” Soft button to the right to return your main faders.

A video overview of Scenes is also available for you to enjoy online at:

qsctraining.com/touchmix



Image 4.2

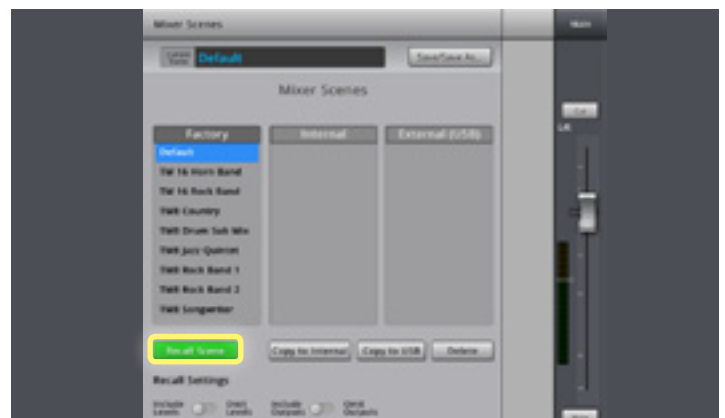


Image 4.3

5. EFFECTS

Now that you have your mix setup and sounding good with EQ and dynamics, let's sweeten it up even more.

TouchMix comes with 6 FX Processors that can be recalled into 4 Effects Master Engines. Once an **Effect** is designated to an engine, that **Effect** can be sent to any input at any level you choose.

Let's start with some **Reverb**.

- From the **"HOME"** screen > open an Input channel by touching on its name above the fader (**Image 5.1**).



Image 5.1

- Select the **"FX"** tab at the top of the screen (**Image 5.2**).

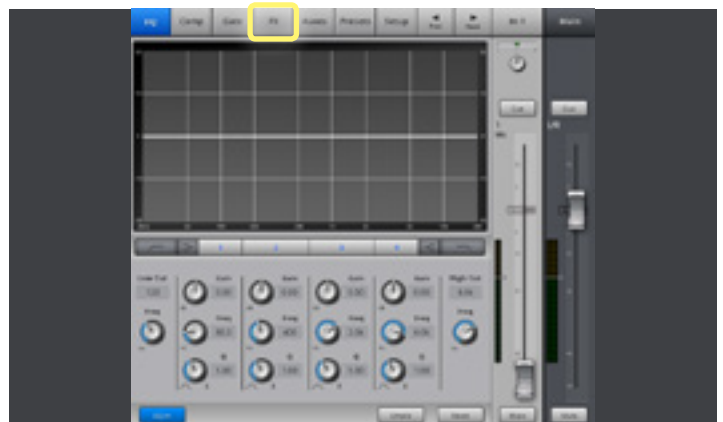


Image 5.2

- Select the **Slide Fader** (**Image 5.3**) next to **FX 2**, which is set for a **Lush Reverb**.



Image 5.3

5. EFFECTS (Cont'd)

- Use the **Master Encoder (Image 5.5)** to adjust the level of the effect.

We now have reverb on our channel!

Now let's make some fine adjustments to our reverb:

- Touch the Reverb icon (**Image 5.4**) next to the slide fader to access its parameters.
- Select a parameter by touching the corresponding knobs.
- Use the **Master Encoder (Image 5.5)** to adjust the FX parameters (press and turn for fine adjustment.)



Image 5.4



Image 5.5

You can **Save** your **FX Settings** as a **Custom FX Preset** by pressing "**Presets**" (**Image 5.6**) at the top of the screen and following the same instructions outlined in the **Presets** segment of our walkthrough.

A video overview of Effects is also available for you to enjoy online at:

qsctraining.com/touchmix



Image 5.6

6. WIZARDS

Another great feature unique to TouchMix are the two Wizards. The **Gain Wizard** and the **Effects Wizard** are tools that will help you set the mixer up optimally and easily. These features are designed to help you get the most out of your live performance.

The **FX Wizard** will help choose the best **FX Preset** for your specific application.

To access the **FX Wizard**:

- Press the “**Wizard**” (**Image 6.1**) button on the right-hand side of the mixer.



Image 6.1

- Select “**FX Wizard**” (**Image 6.2**) on the screen.



Image 6.2

The Wizard will open to FX1, which is designated by the tabs at the top of the screen. You can select any of the 4 FX engines by selecting the corresponding tab here. With the effect you want to work with, you can now select a Preset for



Image 6.3

6. WIZARDS (Cont'd)

that engine (Image 6.3).

To setup an **Effect Preset**:

- Select a category from the “**Source**” (Image 6.4) window.

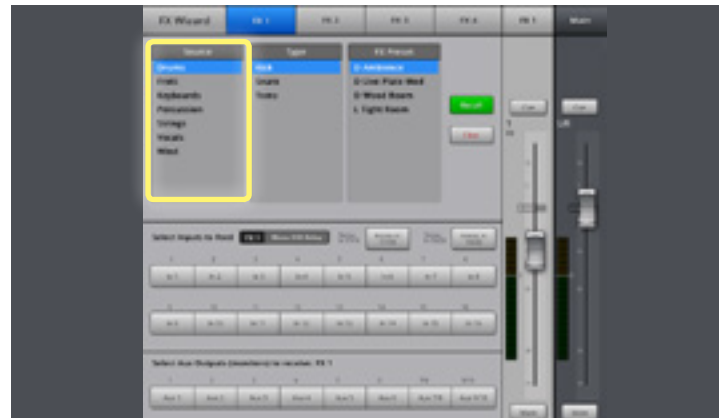


Image 6.4

- Select a “**Type**” from the middle window (Image 6.5).

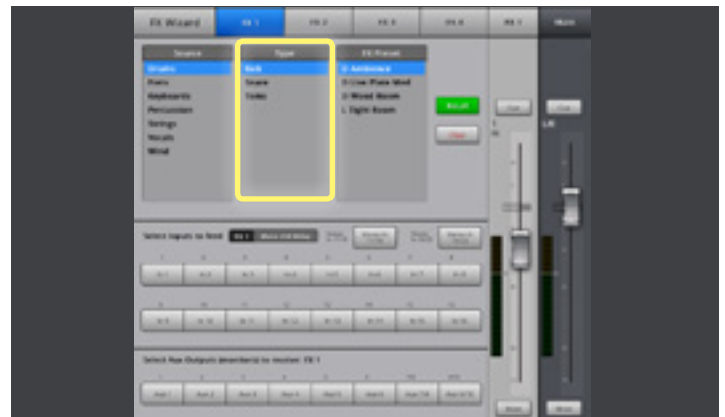


Image 6.5

In the last window you can choose the **Preset** that best fits your application.

- With the **Preset** selected, touch the green “**Recall**” (Image 6.6) button and you’re done.

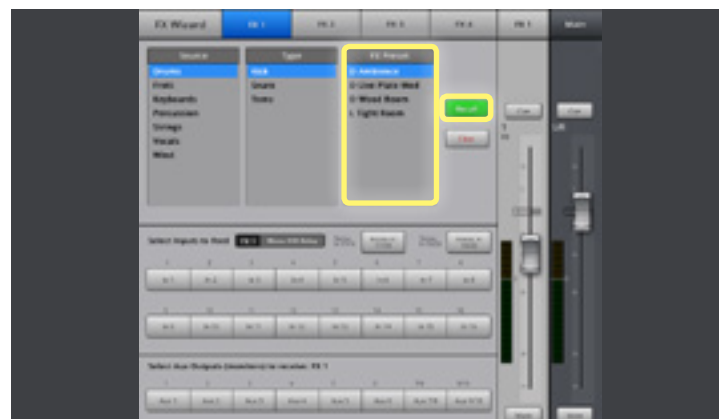


Image 6.6

6. WIZARDS (Cont'd)

The **Gain Wizard** is designed to help you get the best performance possible from your mixer by helping you set the trim level for your Input preamps.

To Access the **Gain Wizard**:

- Press the “**Wizard**” (**Image 6.7**) button on the right-hand side of the mixer.
- Select the “**Gain Wizard**” (**Image 6.8**) button on the screen.



Image 6.7



Image 6.8

The **Wizard** will show you all **16 Inputs** with clip indicators above them. The number indicated on the red clip indicator is the number of increments you should turn the Input **Trim Knob** counter-clockwise (down) (**Image 6.9**).

A video overview of the TouchMix Wizards is also available for you to enjoy online at:

qsctraining.com/touchmix



Image 6.9

7. AUXES

The TouchMix 16 has 6 Mono Auxiliary Outputs and two stereo auxiliary outputs, allowing for a total of 8 separate Aux mixes.

Touchmix 8 has a total of 4 Mono Auxes with a stereo output jack paralleled to Aux channels 3 and 4.

To set up an **Aux Mix**:

- Press the “**Aux**” (**Image 7.1**) button to open the **Aux Mix** on faders.



Image 7.1

The faders will look a little different than the main **HOME** screen. Also, the fader on the right will change to the **Aux 1** main fader. You can now create your mix for **Aux 1** (**Image 7.2**).



Image 7.2

To **setup** a mix on another **Aux**:

- Press “**Mix Select**” (**Image 7.3**) above the **Aux main fader** and choose the **Aux** you wish to setup from the menu that appears (**Image on next page**).



Image 7.3

7. AUXES (Cont'd)

- Choose the **Aux** you wish to setup from the menu that appears (**Image 7.4**).



Image 7.4

You can also route an individual input channel to any of the **Auxes** from the native **Aux** screen within each **Input channel**.

To access this:

- Open an Input by touching its name above the fader from the main “**Home**” Screen.
- Select “**Auxes**” at the top of the **channel** screen (**Image 7.5**).



Image 7.5

- Select an **Aux** fader (**Image 7.6**) by touching it.
- Use the **Master Encoder (Image 1.6)** to adjust the level being sent to that **Aux**.

A video overview of the TouchMix Auxes is also available for you to enjoy online at:

qsctraining.com/touchmix

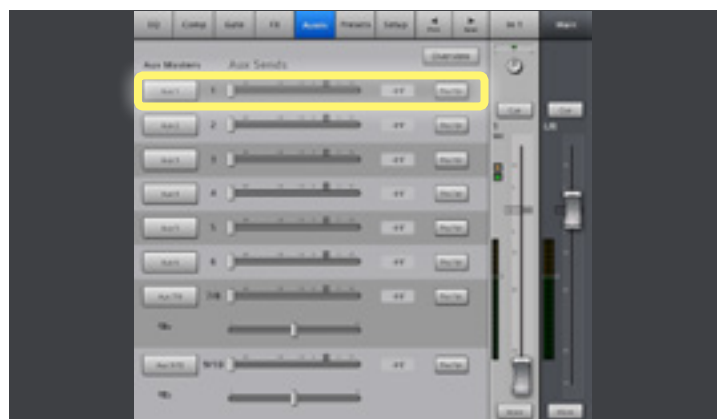


Image 7.6

8. RECORDING

TouchMix is capable of multi-track recording all individual inputs and the stereo main mix to an external hard drive. These recordings can be exported later to be mixed and edited further using your favorite Digital Audio Workstation (DAW).

To **record tracks**:

- Press the **“Record/Play”** (Image 8.1) button on the side of the screen.



Image 8.1

Now you can setup your recording session:

- Press **“New/Recall Session”** (Image 8.2) to the left of the **Transport Controls**.



Image 8.2

*With a compatible hard drive connected to the mixer you can name and save your session as well as set your recording pick off point to **Pre** or **Post** EQ and Dynamics (Image 8.2). If you'd like the EQ, COMP and GATE settings to be recorded, set the pick off point to **“Post”**. If you want to record **“dry”** tracks, without any EQ, COMP and GATE set the pick off to **“Pre.”***

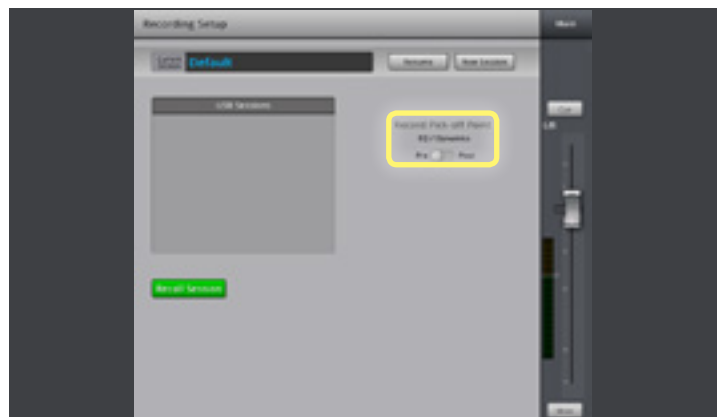


Image 8.3

8. RECORDING (Cont'd)

Once we've created a session, we're ready to record!

- Press the **“Record/Play”** (Image 8.4) button once more to get back to your Transport Control.



Image 8.4

- Press the **“Arm”** (Image 8.5) button at the bottom of the channels you want to record.



Image 8.5

- Press the red **“Record”** (Image 8.6) button to begin your recording



Image 8.6

8. RECORDING (Cont'd)

After recording, you can listen back to any or all of your recorded tracks!

To listen back to tracks that have been recorded:

- Press the “**Arm**” (**Image 8.7**) button to **unarm** the tracks that were previously recorded.



Image 8.7

- Touch the “**Track**” toggle-switch (**Image 8.8**) above the **Arm** button to set those channels for playback.



Image 8.8

The **Arm** button will disappear and a **green play** icon will appear next to the fader indicating that the channel is set for playback (**Image 8.9**).



Image 8.9

8. RECORDING (Cont'd)

- Set the **Play Pointer** to the beginning of the session by touching the **Return to Zero** arrow (**Image 8.10**).



Image 8.10

- You can also **Reset** the **Recording Transport** by dragging the “**Play Pointer**” **Locator** (**Image 8.10**) back to zero.



Image 8.11

- Touch **Play** on the **Recording Transport** (**Image 8.12**) and adjust the fader levels as needed.

A video overview of Recording is also available for you to enjoy online at:

qsctraining.com/touchmix



Image 8.12

9. VIDEO TRAINING SERIES

Visit the QSC TouchMix page at http://qsc.com/products/mixers/touchmix_series/ for videos, support, user docs, product registration, and more!

VIDEO TRAINING SERIES

An engaging, self-guided video tutorial series

[Part A: Mixer Navigation](#)

[Part B: Simple vs. Advanced Modes](#)

[Part C: Preset Libraries](#)

[Part D: FX Wizard](#)

[Part E: Advanced Effects](#)

[Part F: Gain Wizard](#)

[Part G: Recording Functions](#)

[Part H: Advanced Recording and Playback](#)

[Part I: Firmware Update](#)

▶ qsctraining.com/touchmix
